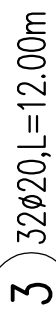
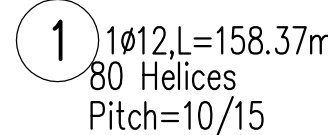


M. 1:50



2 1ø12, L=184.78m
93 Helices
Pitch=10/15/10

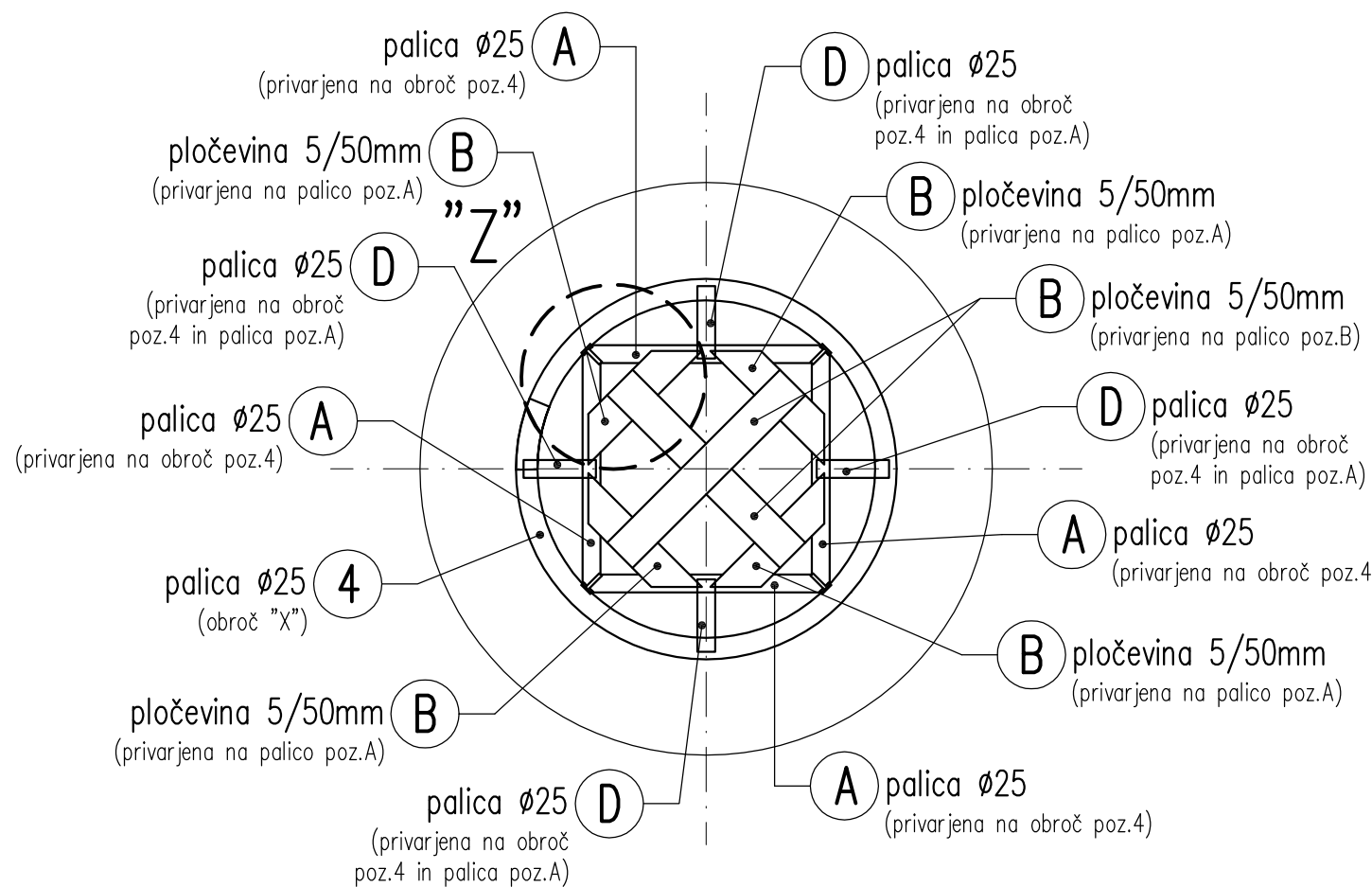


M. 1:25



poz.	material	kg	kom	skupaj kg
4	ø25 - GA, l=1810mm	upoštevano v izvlečku armature		

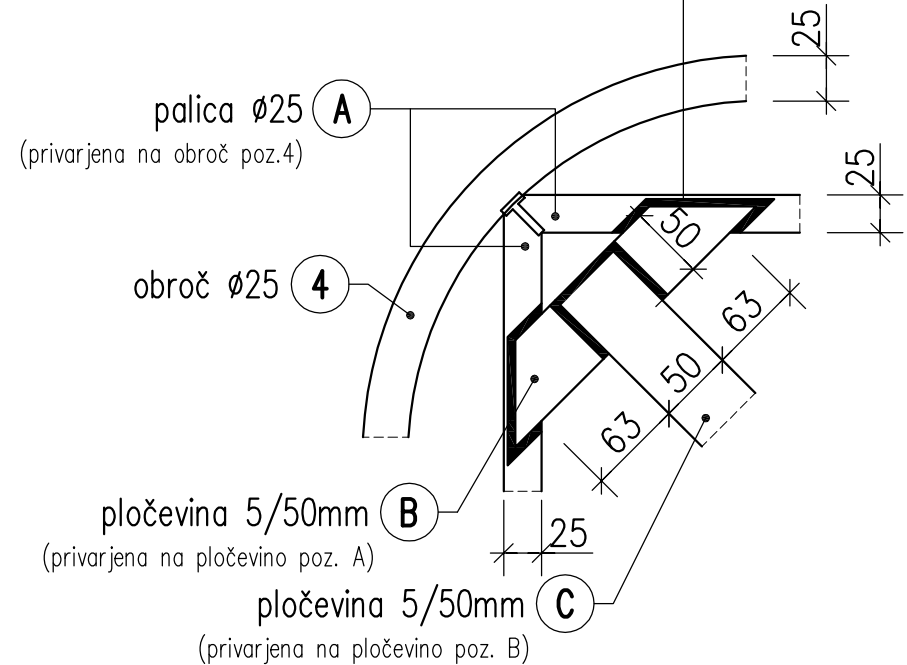
M. 1:10



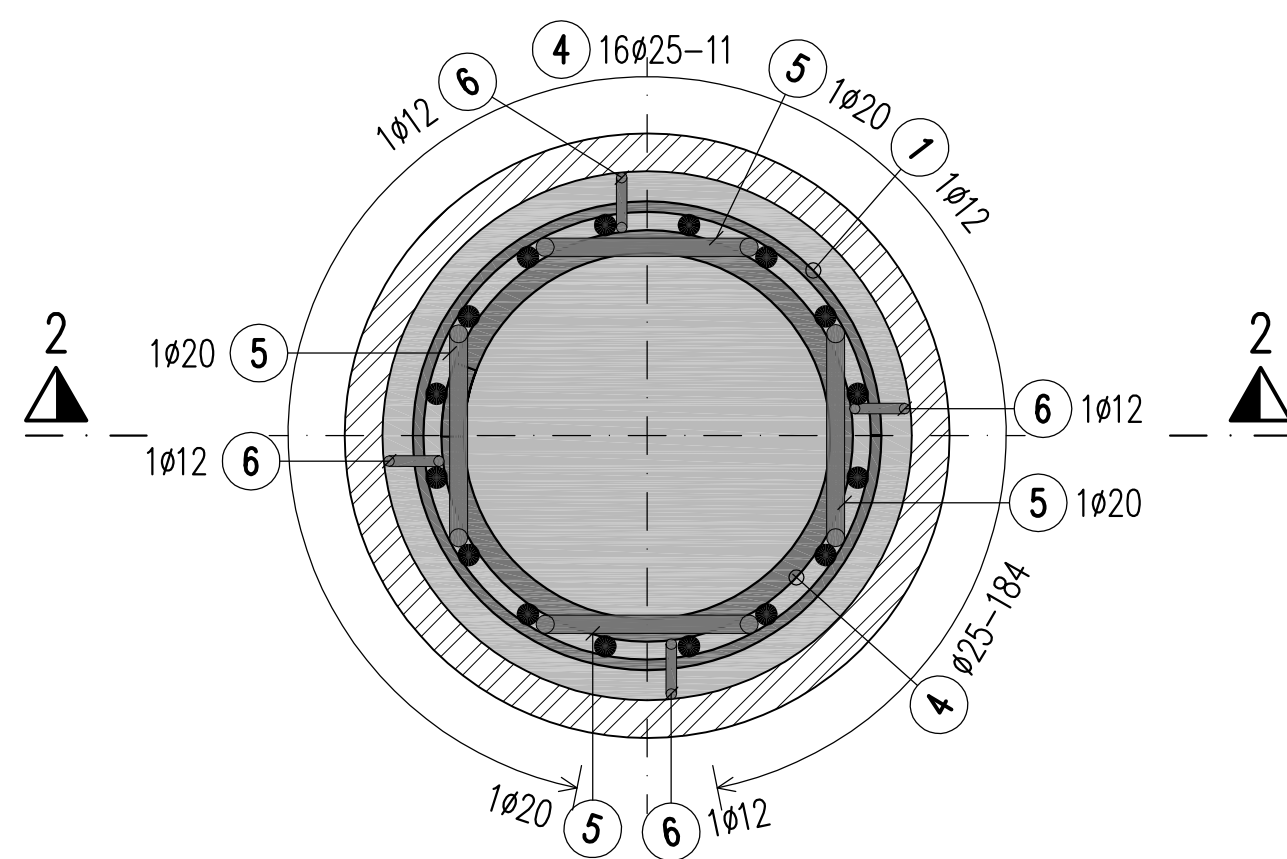
poz.	material	kg	kom	skupaj kg
4	Ø25 – GA, l=1810mm	upoštevano v izvilke armature		
A	Ø25 – GA, l=360mm	1,39	4	5,56
B	ploščato železo 5/50, l=225mm	0,44	4	1,76
C	ploščato železo 5/50, l=350mm	0,68	2	1,36
D	Ø25 – GA, l=100mm	0,39	4	1,56
skupaj kg za 1 kom. :		10,24		
skupaj kg za 16 kom.:		163,84		

M. 1:5

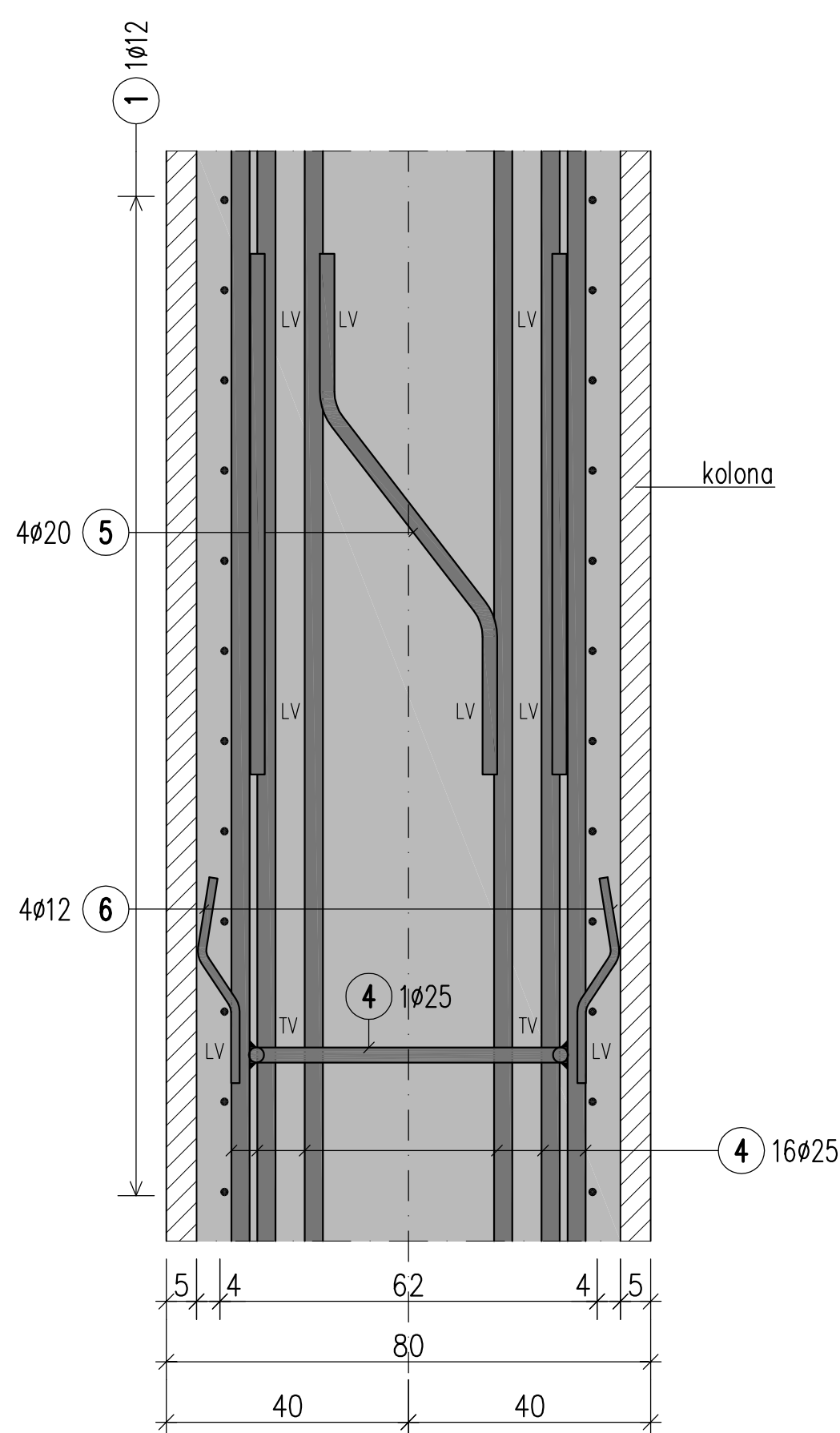
VSI ZVARI a=5mm!



M. 1:10

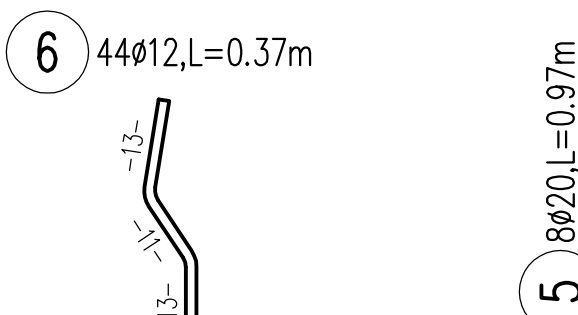


DETAJL VARENJA poz. 5 in 6 M. 1:10



Vzdolžne palice na katere sta privarjeni palici poz. 5 in 6, morajo biti privarjene na nosilni obroč koša pilota poz. 4 (obroč "X")

LV – linijski var
TV – točkovni var



PALICNA		ARMATURA		Jeklo: S500S			
Poz.	Kom	fi	Dolzina	D12		D20	D25
1		12	158.37	158.37			
2		1	12	184.78	184.78		
3		32	2.0	12.00		384.00	
4		12	25	1.81			21.72
5		8	20	0.97		7.76	
6		44	12	0.37	16.28		
Skupna dolzina				359.43		391.76	21.72
kg / m				D12 0.911	D20 2.530	D25 3.951	
kg / profil				327.441	991.153	85.816	
Skupna teza (kg)			1404.410				
Komnadov	16	22470:560					

[illegible][illegible]
$$h/w = 59.4 / 90.0 (0.54m^2)$$

THIS DOCUMENT MUST BE TREATED AS CONFIDENTIAL. IT MUST NOT BE COPIED, DISTRIBUTED TO OTHERS, OR ITS CONTENTS BE USED OR COMMUNICATED, EITHER IN WHOLE OR IN PART, WITHOUT WRITTEN PERMISSION. ALL RIGHTS